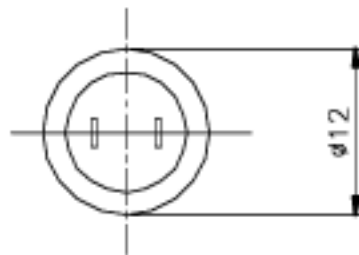
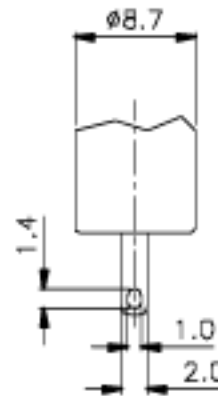
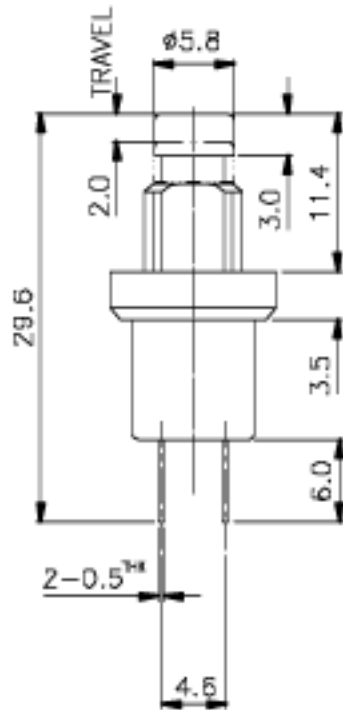


SCHEMATIC



ISSUED	SPECIFICATION (INITIAL)	TITLE: PUSH BUTTON SWITCH 1P1T		
	RATING: DC 50V 0.5A	MODEL NO: PB-11D03-T(H1)		
	CONTACT RESISTANCE: Not mer than 30mΩ (initial)	UNIT: m m	DWN	
	INSULATION RESISTANCE: 500MΩ at 500VDC	SCALE: 2 : 1	CHK'D	
	WITHSTAND VOLTAGE: AC 500V for 1 min	TOLERANCE: ±0.2	APPD.	
	OPERATION FORCE: 200±100g	DRWG NO: E80012-01		
	SWITCHING LIFE: 10000cycles(8-10w/m loading)			
BY:				
DATE:				