

MATERIAL

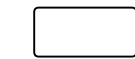
Insulator : 30% Glass fiber PBT
(D type: NYLON 66)

SPECIFICATION

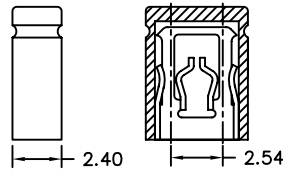
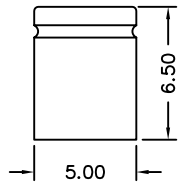
Current Rate : 1 AMP
Insulation Resistance : 5000MΩMin. at DC 500V
Contact Resistance : 20mΩMax. at DC 100mA
Dielectric Voltage : 500V AC for one minute
Operation Temperature : -55°C to +105°C

200-7 1- x x x x 50
1 2 3 4 5 6

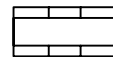
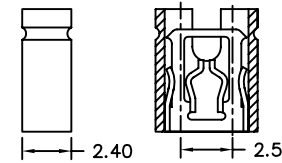
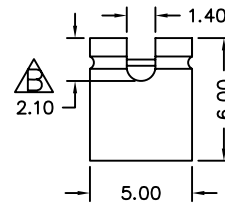
1. 7: Green Product
2. B: Brass
P: Phosphor Bronze
3. A: A type
B: B type
D: D type
4. G: Gold flash
T: Tin plated
5. B: Black Insulator
R: Red Insulator
U: Blue Insulator
W: White Insulator
Y: Yellow Insulator
E: Green Insulator
6. Pinrex internal code.



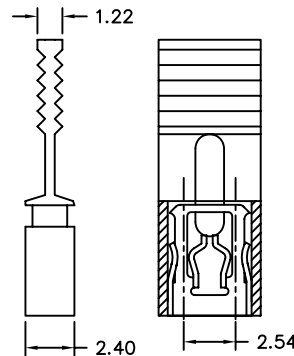
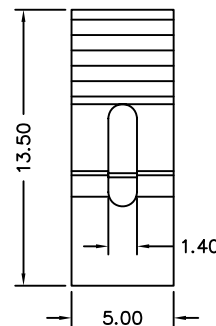
A TYPE= CLOSE 6.5



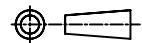
B TYPE= OPEN 6.0



D TYPE= W HANDLE 13.5



TOLERANCE
.0 =±.30
.00 =±.20
.000 =±.XXX
.0000=±.
ANG.=±3'



UNITS : mm

SCALE NONE SIZE A4

OLD PART NO.

DRAWER *Naomi*

SHEET 1 OF 1 REV. **B**

TITLE

MINI JUMPER 2.54mm

NEW PART NO.

200-71-xxxx50

P 頻銳科技股份有限公司
PINREX TECHNOLOGY CORP.

DRAW NO.

200-71-xxxx50(B版)

REV.	DESCRIPTION	DATE
B	REVISE DIMENSIONS	2007/10/05
A	RELEASE	2007/08/28